



ModernRockville.com
Text "INDOT Rockville" to 468311

855-INDOT4U (855-463-6848)
www.INDOT4U.com

Questions from June 2020 Solutions Questionnaire

This questionnaire is now closed.

PROJECT MATERIALS

Enclosed with this survey are a project fact sheet and summary of responses to the January-March 2020 questionnaire, which was focused on top issues. If you have an internet-connected computer or mobile phone, you may watch a short overview video at ModernRockville.com.

The new questionnaire asks the public to share ideas and prioritize improvements for segments of Rockville Road (U.S. 36) between Raceway Road and I-465.

DESCRIBE YOURSELF

Please Note: These first two questions help us better understand your interest in the project and use of the roadway.

Question 1. Which of the following best describes your involvement with Rockville Road in Marion County? (Please mark all that apply)

- I own property with frontage on Rockville Road.
- I am a resident who lives in the immediate area.
- I do not live in the immediate area but use Rockville Road as part of my commute.
- I own/operate a business in the immediate area.
- My business is not in the immediate area but benefits from the U.S. 36 corridor.
- I use Rockville Road occasionally as a through route.
- I am an interested member of the public.

Question 2. How often do you typically drive on Rockville Road in Marion County?

- Nearly every day
- 4-5 days a week
- 2-3 days a week
- 0-1 days a week
- Fewer than 3 days a month

CONGESTION

1



62% SAID CONGESTION (EAST-WEST TRAFFIC DELAYS) WAS THEIR TOP PRIORITY

- 2 **Waiting to turn left at an intersection/roadway**
- 3 **Signal timing (too short or too long of a cycle)**
- 4 Congestion (north-south traffic delays)
- 5 Waiting to turn left into a business, residential drive, etc.
- 6 Traffic moves too fast
- 7 Sufficient turn radius for larger vehicles

Sixty-two percent of respondents to a questionnaire earlier this year indicated congestion was their top priority for Rockville Road. Similar concerns of signal timing and waiting to turn left at an intersection or roadway came in second and third.

The Modern Rockville Road project is planning for the future, and construction of any road improvements would not begin until 2023 at the earliest. Traffic volumes are expected to return to more typical levels as more businesses and facilities reopen following the COVID-19 pandemic.

Question 3. Please rank the following congestion solutions from highest to lowest, with 1 being your preferred solution.

- Add a lane for through traffic in each direction
- More turn lanes at major intersections to clear the way for through traffic
- Require left-turning traffic to first go straight or turn right and then make a permitted U-turn
- Other (You may list specifics in question 10)
- None of the above

Question 4. If INDOT were to add a lane for through traffic in each direction, please rank the following options from highest to lowest, with 1 being your preferred solution.

- Maintain the general footprint of the road by repurposing the center left-turn lane and paved shoulders. There would be limited gaps in the median for left turns.
- Expand the footprint of the road to maintain paved shoulders.
- Provide frequent left-turn lanes
- Other (You may list specifics in question 10)
- None of the above

SAFETY

1



59% SAID MOTORIST SAFETY WAS THEIR TOP PRIORITY

- 2 **Bridge and pavement condition**
- 3 **Pedestrian and bicycle safety**
- 4 Driveway access
- 5 Drainage
- 6 Property values

Nearly 59 percent of respondents to a questionnaire earlier this year ranked motorist safety as their highest priority among non-traffic issues. Other safety concerns that were ranked high included bridge and pavement conditions and pedestrian and bicycle safety.

Question 5. Please rank the following safety design solutions you would like INDOT to make from highest to lowest, with 1 being your preferred solution.

- Maintain pavement to minimize future potholes
- Repair/replace bridges to minimize future closures and construction
- Limit the number of places traffic may turn left
- Improve bike and pedestrian facilities such as sidewalks, a bike lane or multi-use trail
- Improve visibility using street lighting and lane striping
- Other (You may list specifics in question 10)
- None of the above

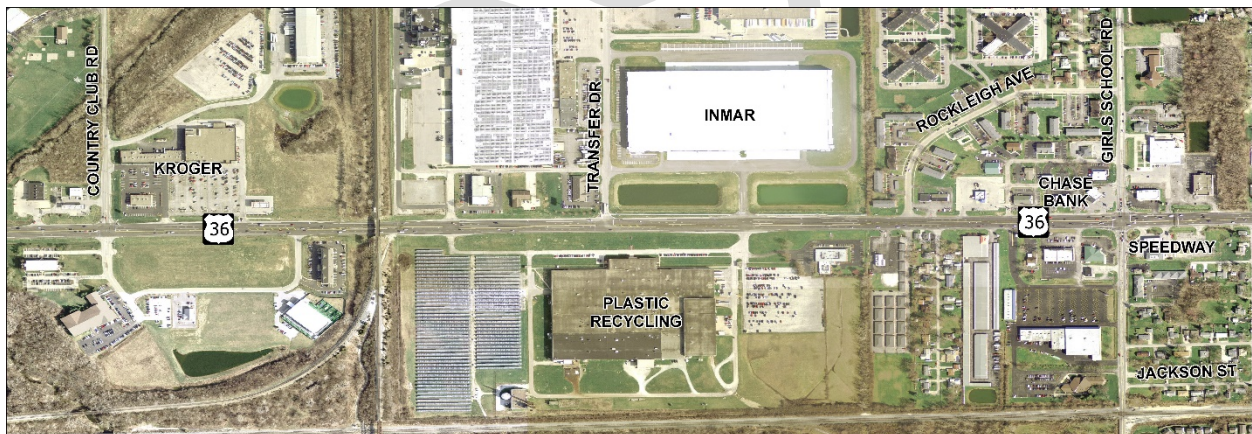
ROAD SEGMENTS

For the following questions, you will be shown maps of Rockville Road sections from west to east.



Question 6. Please rank the following issues for the section between Raceway Road and Country Club Road from highest to lowest, with 1 being your top issue.

- Congestion
- Difficulty making safe turns
- Bike and pedestrian facilities
- Nighttime visibility
- Potholes
- Drainage or standing water on roadway



Question 7. Please rank the following issues for the section from Country Club Road to Girls School Road from highest to lowest, with 1 being your top issue.

- Congestion
- Difficulty making safe turns
- Bike and pedestrian facilities
- Nighttime visibility
- Potholes
- Drainage or standing water on roadway



Question 8. Please rank the following issues for the section between Girls School Road and High School Road from highest to lowest, with 1 being your top issue.

- Congestion
- Difficulty making safe turns
- Bike and pedestrian facilities
- Nighttime visibility
- Potholes
- Drainage or standing water on roadway



Question 9. Near I-465, the City of Indianapolis is building sidewalks this year along High School Road. In 2021, right-turn lanes will be added eastbound on Rockville Road approaching High School Road. Once these projects are completed, what do you anticipate will be your top issues for this section? Please rank from highest to lowest, with 1 being your top issue.

- Congestion
- Difficulty making safe turns
- Bike and pedestrian facilities
- Nighttime visibility
- Potholes
- Drainage or standing water on roadway

Question 10. What other solutions or additional details do you have to share with the project team? Please be specific and include specific locations in your comments.

THANK YOU!

Providing your input early in the project will help the Project Team develop the best solutions to serve all road users.

To stay updated on this project:

- Text INDOT Rockville to 468311
- Visit ModernRockville.com
- Search for Modern Rockville on Facebook
- Follow @ModernRockville on Twitter